

**PLANT LEGEND**

SYMBOL	BOTANICAL / COMMON NAME	SIZE	SPACING	QTY.	NOTES
<b>TREES</b>					
	ACER PALMATUM 'EMPEROR' 1' EMPEROR 1 JAPANESE MAPLE	#1.5 POT	SEE PLAN	3	IN PLANTERS
	PARROTIA PERSICA 'GOLDEN BELLTOWER' GOLDEN BELLTOWER IRONWOOD	#2.5 POT	SEE PLAN	3	IN PLANTERS
<b>SHRUBS</b>					
	ILEX CRENATA 'SKY PENCIL' SKY PENCIL JAPANESE HOLLY	#3 POT	0.75m O.C.	17	EVERGREEN FORMAL HEDGE
	POLYSTICHUM MUNITUM SWORD FERN	#1 POT	1.0m O.C.	6	NATIVE SPECIES
	TAXUS X MEDIA 'HICKSII' HICKS' YEW	#2 POT	0.6m O.C.	32	FORMAL HEDGE SCREEN IN PLANTERS
	VACCINIUM OVATUM EVERGREEN HUCKLEBERRY	#2 POT	1.0m O.C.	7	NATIVE SPECIES
<b>GROUNDCOVER, VINES &amp; PERENNIALS</b>					
	GAULTHERIA SHALLON SALAL	#1 POT	0.75m O.C.	7	NATIVE SPECIES
	HOSTA SSP. HOSTA	#1 POT	(4) PER POT	12	MIX LEAF COLOURS & SIZES IN PLANTERS
	IBERIS SEMPERVIRENS 'SNOW CONE' SNOW CONE CANDY TUFT	#1 POT	0.3m O.C.	36	CASCADING IN PLANTERS
	MISCANTHUS SINENSIS 'YAKU JIMA' DWARF MAIDEN GRASS	#1 POT	0.75m O.C.	17	ORNAMENTAL GRASS
	ROSA RUGOSA 'SNOW PAVEMENT' WHITE SHRUB ROSE	#2 POT	0.75m O.C.	19	FLOWERING GROUNDCOVER

**PLANTING NOTES**

- ALL LANDSCAPE INSTALLATION AND MAINTENANCE SHALL MEET OR EXCEED THE MOST RECENT STANDARDS SET OUT BY THE CANADIAN LANDSCAPE NURSERY ASSOCIATION (CLNA) / CANADIAN SOCIETY OF LANDSCAPE ARCHITECTS (CSLA) CANADIAN LANDSCAPE STANDARD.
- SOIL DEPTHS: SHRUBS - 450mm  
TREES - 900mm AROUND AND BELOW ROOTBALL IN PLANTERS
- MULCH SHALL BE COMPOST PER SECTION 1.0 MULCHING OF THE BCNTA/ BCSLA BC LANDSCAPE STANDARD. MULCH DEPTH SHALL BE 75mm MINIMUM OVER ALL TREE AND SHRUB PLANTING AREAS AND PLANTERS.
- PLANT MATERIAL QUALITY, TRANSPORT AND HANDLING SHALL COMPLY WITH BCNTA/ BCSLA STANDARDS FOR NURSERY STOCK.
- ALL PLANTING AREAS SHALL BE WATERED VIA AN UNDERGROUND AUTOMATIC IRRIGATION SYSTEM. IRRIGATION EMISSION DEVICES SHALL BE LOW VOLUME ROTARY NOZZLES OR DRIP EQUIPMENT.
- ALL PLANTERS SHALL BE WATERED VIA THE AUTOMATIC IRRIGATION SYSTEM. IRRIGATION EMISSION DEVICES SHALL BE DRIP EQUIPMENT.
- PLANT QUANTITIES ARE FOR INFORMATION ONLY. IN CASE OF ANY DISCREPANCY THE PLAN SHALL GOVERN.
- ALL PLANT MATERIAL SHALL MATCH SPECIES AS INDICATED ON THE PLANTING LEGEND. CONTACT THE LANDSCAPE ARCHITECT FOR APPROVAL OF ANY SUBSTITUTIONS. NO SUBSTITUTIONS WILL BE ACCEPTED WITHOUT PRIOR WRITTEN APPROVAL OF THE LANDSCAPE ARCHITECT.
- NO PLANTS REQUIRING PRUNING OF MAJOR BRANCHES DUE TO DISEASE, DAMAGE OR POOR FORM WILL BE ACCEPTED.

**IRRIGATION EQUIPMENT LEGEND**

SYMBOL	MANUFACTURER	MODEL	DESCRIPTION
	TBD	TBD	'SMART' (ET) AUTOMATIC IRRIGATION CONTROLLER IN MECHANICAL ROOM
	BY MECHANICAL	BY MECHANICAL	25mm (1") DOUBLE CHECK BACKFLOW PREVENTER AND WATER SUPPLY IN MECHANICAL ROOM.
		SCHEDULE 40	25mm (1") PVC MAINLINE
		SCHEDULE 40	PVC SLEEVES UNDER ALL PAVING AND THROUGH WALLS MIN., TYP: MAINLINE & CONTROL WIRE: 100mm (6") BURIAL DEPTH TO MATCH DEPTH OF CARRIED PIPE. EXACT LOCATIONS TBD

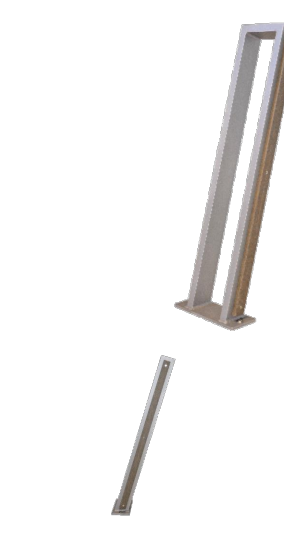
**IRRIGATION NOTES**

- IRRIGATION SYSTEM INSTALLATION SHALL MEET OR EXCEED THE THE REQUIREMENTS SET OUT IN THE MOST CURRENT VERSION OF THE CANADIAN NURSERY LANDSCAPE ASSOCIATION (CNLA) / CANADIAN SOCIETY OF LANDSCAPE ARCHITECTS (CSLA) CANADIAN LANDSCAPE STANDARD.
- ALL PLANTING AREAS SHALL BE WATERED VIA THE UNDERGROUND AUTOMATIC IRRIGATION SYSTEM. IRRIGATION EMISSION DEVICES SHALL BE LOW VOLUME ROTARY NOZZLES OR DRIP EQUIPMENT.
- ALL PLANTERS SHALL BE WATERED VIA THE AUTOMATIC IRRIGATION SYSTEM. IRRIGATION EMISSION DEVICES SHALL BE DRIP EQUIPMENT.
- THE CONTRACTOR SHALL ADJUST THE PLACEMENT AND RADIUS OF SPRINKLERS AS REQUIRED BY FIELD CONDITIONS TO ACHIEVE FULL COVERAGE OF ALL PLANTED AREAS AND TO MINIMIZE OVER-SPRAY ONTO ADJACENT HARD SURFACES, FENCES AND PROPERTY LINES.
- ALL PIPING UNDER PAVING SHALL BE INSTALLED IN SEPARATE SCHEDULE 40 SLEEVES AT A MINIMUM DEPTH OF 600mm WITH 150mm OF SAND BACKFILL ABOVE AND BELOW PIPE. ALL WIRING UNDER PAVING SHALL BE INSTALLED IN SEPARATE SCHEDULE 40 PVC CONDUIT. ALL SLEEVES AND CONDUIT SHALL BE INSTALLED PRIOR TO PAVEMENT INSTALLATION AND SHALL EXTEND 150mm BEYOND EDGE OF PAVEMENT OR CURB. BACKFILL FOR SLEEVES SHALL BE COMPACTED TO THE SPECIFIED DENSITY FOR THE SUBGRADE.
- OPERATE IRRIGATION CONTROLLER WITHIN THE CITY OF NANAIMO WATER RESTRICTION SCHEDULE.

**GENERAL NOTES**

- THE LANDSCAPING CHARACTER AREA FOR THE SITE IS: OLD NANAIMO.
- REFER TO SITE PLAN PREPARED BY ACE ARCHITECTURE FOR SITE PLAN LAYOUT, PROPOSED FINISHED FLOOR ELEVATIONS AND OTHER ARCHITECTURAL INFORMATION.
- REFER TO CIVIL PLANS AND REPORT PREPARED BY J.E. ANDERSON & ASSOCIATES FOR ALL SITE SERVICING, GRADING AND DRAINAGE INFORMATION.

**URBAN FORM BIKE RACK**  
Model Number: UFRB-35



**DESIGNER NOTES**  
This design takes its cues from the Urban bench in the same series. The angle matches the same angle as the backrest on the bench. The open design provides a range of ways to lock and secure bicycles. Durable aluminum frame and powder coated finish prevent scratching and corrosion over time. Can be installed in virtually any configuration depending on the application. The recycled plastic lumber acts as a buffer between the bicycle frame and the bike rack preventing wear and tear on both the bike and the bike rack. Perfect for environments where the use of bike racks is seasonal. Simply add and take away as needed.

**AVAILABLE RECYCLED PLASTIC LUMBER COLOURS**



**20-40% RECYCLED CONTENT BY WEIGHT 100% RECYCLABLE**

100% Canadian Made  
Wishbone Ltd. provides an extended 10 year limited warranty from the date of purchase.  
Visit us online at [www.wishboneitd.com](http://www.wishboneitd.com)  
Wishbone Site Furnishings | 4210-27090 Gloucester Way | Langley, BC CANADA V4V 3Y5 | 866.626.0476 sales@wishboneitd.com

**2- Stall Bike Rack**

**Wishbone site furnishings**

**PRODUCT SPECIFICATIONS**

Products Re-Planet Advantage™ Recycled Plastic Slats  
Standard Colors: Black, Green, Harbor Gray, Redwood, Sand, Walnut  
Colors Available: Black, Green, Harbor Gray, Redwood, Sand, Walnut  
Durable Powder Coated Aluminum Frame  
Standard Colors: Bronze Slats, Vector Ridge™, Noctis Lichen, Timeless Rust, Gray Gold, Textured Silver, Precious Sand, Emory Red, Black Textured, Earth Clay, Noble Bronze, Modern Teak

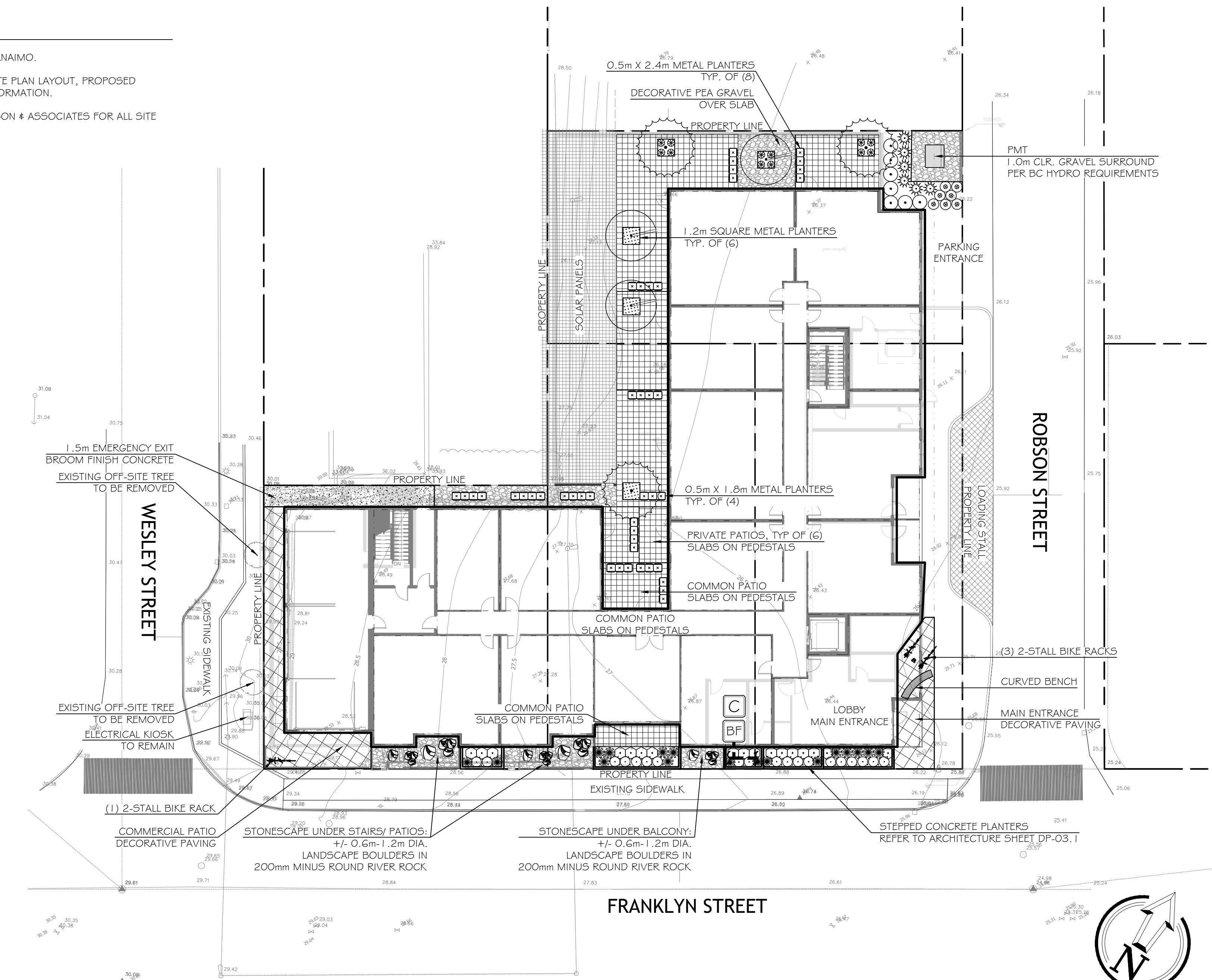
Long Lasting Stainless Steel Hardware  
Designed to Protect the Bike Surface Mountable

**CUSTOMIZED SOLUTIONS**

Custom Powder Coating (Setup Charges May Apply)  
Galvanized Steel Frame  
In-ground Mounting  
INST-1 Stainless steel bolt down kit

**PRODUCT DIMENSIONS**

Height: 35 inches / 889mm  
Depth: 8 inches / 203mm  
Width: 8.25 inches / 210mm  
Weight: 12lbs / 5.4kg



**Bench Style**

**Metal Planters - Square**

**Metal Planters - Rectangle**

**Green Theory**

**Square**

- Fully Welded Construction
- ANMA 2004 Powder Coat
- Powder Coated Inside and Out
- Standard 1" Top Lip and 1" Return
- Available Drains or Fully Sealed Bottom

**How to Specify this Product**  
Include Product Profile as well as Length, Width and Height. Specify top to dimensions. Supply drawings for custom projects and include product name, materials, and color.

**Common Sizes**

- 15" x 15" x 18" H
- 20" x 20" x 24" H
- 24" x 24" x 24" H
- 30" x 30" x 24" H
- 36" x 36" x 24" H
- 42" x 42" x 24" H
- 48" x 48" x 24" H

**Custom Sizes**

- L<sub>1</sub> x W<sub>1</sub> x H<sub>1</sub>
- L<sub>2</sub> x W<sub>2</sub> x H<sub>2</sub>
- L<sub>3</sub> x W<sub>3</sub> x H<sub>3</sub>

**Wide Rectangle**

- Fully Welded Construction
- ANMA 2004 Powder Coat
- Powder Coated Inside and Out
- Standard 1" Top Lip and 1" Return
- Available Drains or Fully Sealed Bottom

**How to Specify this Product**  
Include Product Profile as well as Length, Width and Height. Specify top to dimensions. Supply drawings for custom projects and include product name, materials, and color.

**Common Sizes**

- 24" x 30" x 24" H
- 30" x 30" x 24" H
- 36" x 30" x 24" H
- 42" x 30" x 24" H
- 48" x 30" x 24" H
- 54" x 30" x 24" H
- 60" x 30" x 24" H

**Custom Sizes**

- L<sub>1</sub> x W<sub>1</sub> x H<sub>1</sub>
- L<sub>2</sub> x W<sub>2</sub> x H<sub>2</sub>
- L<sub>3</sub> x W<sub>3</sub> x H<sub>3</sub>

**macdonald gray**  
814 Shorewood Drive, Parksville, BC V9P 1S1  
TEL: 250.248.3089 EMAIL: info@macdonaldgray.ca  
www.macdonaldgray.ca

THIS DRAWING IS NOT FINAL AND SHALL NOT BE USED FOR CONSTRUCTION WORK UNTIL IT HAS BEEN STAMPED AND SIGNED BY THE LANDSCAPE ARCHITECT. THE COPYRIGHTS TO ALL DESIGNS AND DRAWINGS ARE THE PROPERTY OF MACDONALD GRAY CONSULTANTS INC. REPRODUCTION OR USE FOR ANY PURPOSE OTHER THAN THAT AUTHORIZED BY MACDONALD GRAY CONSULTANTS INC. IS FORBIDDEN.

**Nanaimo Multifamily**  
**Groupe Denux**  
**350 & 398 Franklyn Street, Nanaimo, BC**

**LANDSCAPE ARCHITECTURE PLAN**

Date: March 27, 2024  
Drawn: CM  
Checked: CM  
Scale: 1:200 metric  
Project Number: 24-0356  
DRAWING NUMBER: **L1 of 1**

REVISION	DATE	NOTES
#	Date	Notes
0	27MAR2024	DP Coordination
1	27MAR2024	Issued for DP

**RECEIVED**  
**DP1340**  
**2024-APR-05**  
Current Planning